

REV.
E

RATIONALE

GRAPHICS REDRAWN. FLAGNOTE /15/ ADDED TO BOTH ØE AND DIM P IN FIGURE 1. 45° DIMENSION BEHIND THREAD HAS BEEN REMOVED BECAUSE IT IS ALREADY BEING DEFINED ON AS4375, STYLE E. GENERAL UPDATES INCORPORATED.

AS4140™

SAE Technical Standards Board Rules provide that: "This report is published by SAE to advance the state of technical and engineering sciences. The use of this report is entirely voluntary, and its applicability and suitability for any particular use, including any patent infringement arising therefrom, is the sole responsibility of the user." SAE reviews each technical report at least every five years at which time it may be revised, reaffirmed, stabilized, or cancelled. SAE invites your written comments and suggestions.

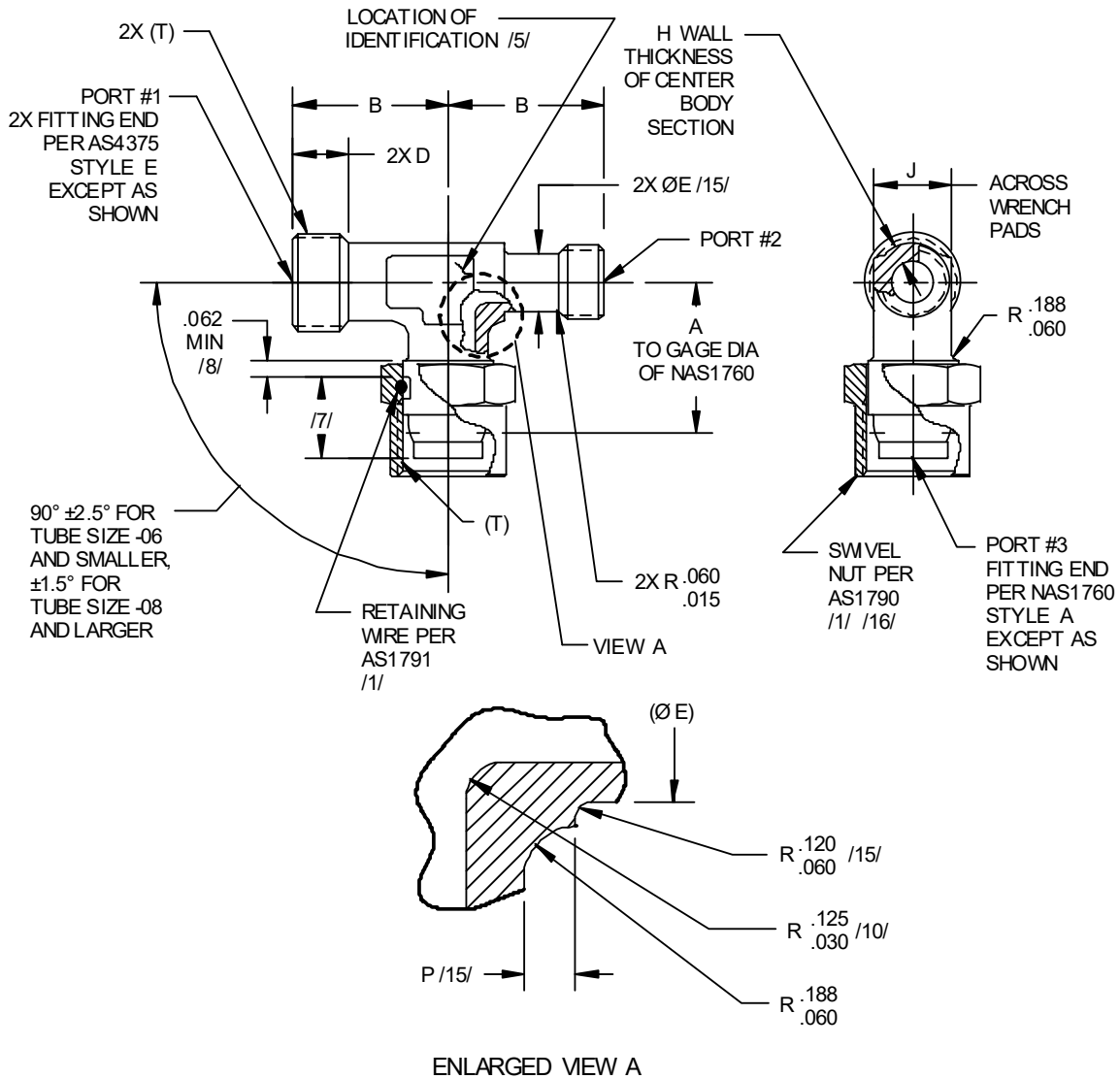
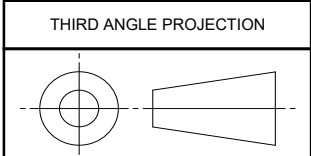


FIGURE 1 - FITTING ASSY, TEE, REDUCER, SWIVEL ON SIDE, REDUCED BODY, FLARELESS

SAE values your input. To provide feedback on this Technical Report, please visit <http://standards.sae.org/AS4140E>



CUSTODIAN: G-3/G-3B

PROCUREMENT SPECIFICATION: AS18280 /4/



AEROSPACE STANDARD

FITTING ASSY, TEE, REDUCER,
SWIVEL ON SIDE,
REDUCED BODY, FLARELESS

AS4140™
SHEET 1 OF 5

REV.
E

ISSUED 1992-11 REAFFIRMED 2000-10 REVISED 2019-07

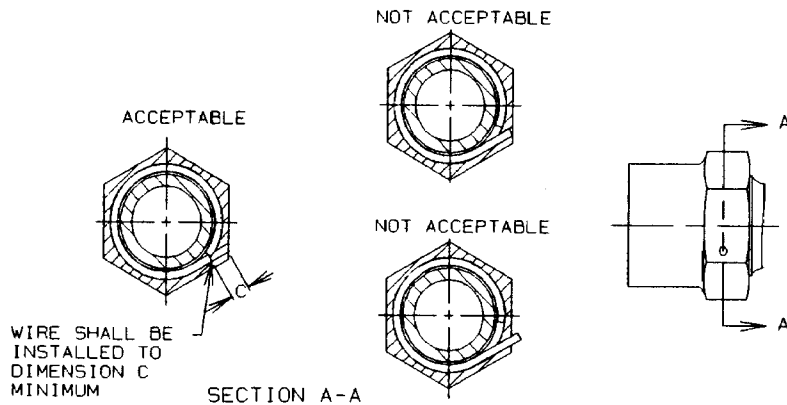


FIGURE 2 - INSTALLATION, SWIVEL NUT RETAINING WIRE

TABLE 1 - DIMENSIONS AND WEIGHTS

BASIC NO. AS4140 /21/ SIZE CODE	H MIN	J	P ±.030	LB/EA APPROX REF CRES	LB/EA APPROX REF TI
04	.050	.390	.030	.076	.042
05	.050	.453	.159	.098	.055
06	.050	.453	.137	.120	.067
08	.050	.577	.140	.220	.124
10	.070	.702	.157	.346	.197
12	.080	.890	.166	.529	.297
16	.090	1.140	.174	.781	.438
20	.110	1.390	.071	1.263	.709
24	.130	1.640	---	1.767	.992

TABLE 2 - FITTING END

SIZE CODE	TUBE OD	T THREAD PER AS8879	C /16/	D	E
04	.250	.4375-20UNJF	.075	.371	.350
05	.313	.5000-20UNJF	.076	.371	.412
06	.375	.5625-18UNJF	.084	.379	.453
08	.500	.7500-16UNJF	.095	.461	.577
10	.625	.8750-14UNJF	.115	.511	.702
12	.750	1.0625-12UNJ	.149	.556	.890
16	1.000	1.3125-12UNJ	.178	.556	1.140
20	1.250	1.6250-12UNJ	.221	.556	1.390
24	1.500	1.8750-12UNJ	.291	.556	1.640